

Devonshire Living EST 1992



THE  
LUNDY PAINTED  
COLLECTION

## Bedside & Chests



LB10  
**Compact Bedside**  
H 720 x W 390 x  
D 300 mm



LB20  
**2 Drawer Bedside**  
H 580 x W 485 x  
D 420 mm



LB30  
**3 Drawer Bedside**  
H 745 x W 485 x  
D 420 mm



LB50  
**5 Drawer Wellington**  
H 1320 x W 610 x  
D 420 mm



LC60  
**2 + 2 Chest**  
H 945 x W 920 x D 420 mm



LC70  
**3 + 2 Chest**  
H 1180 x W 920 x D 420 mm



LC90  
**3 Over 4 Chest**  
H 945 x W 1330 x D 420 mm

## Dressing Table, Stool & Mirror



LD30  
**Dressing Table**  
H 795 x W 1023 x D 414 mm



DS10  
**Stool**  
H 400 x W 500 x D 300 mm  
Grey Fabric Seat Pad



DM05  
**Single Mirror**  
H 450 x W 590 x D 140 mm

## Beds

LH25  
**4'6" Low Foot End Bed**  
H 1085 x W 1500 x L 2094 mm



LH35  
**5' Low Foot End Bed**  
H 1085 x W 1650 x L 2194 mm



LV10  
**Under Bed Drawer**  
H 260 x W 750 x D 640 mm

## Wardrobes



LW20  
**Double Wardrobe**  
H 1920 x W 1035 x D 540 mm  
Supplied with one double hanging rail



LW55  
**2 Drawer Double Wardrobe**  
H 1942 x W 1035 x D 540 mm  
Supplied with one double hanging rail



LW34  
**Sliding Door Wardrobe**  
H 2005 x W 1850 x D 655 mm  
Supplied with one hanging rail



LW91  
**Quad Wardrobe**  
H 2220 x W 2031 x D 577 mm  
Supplied with two single hanging rails  
in each single section and one double  
hanging rail in double section



# Beautiful Detail

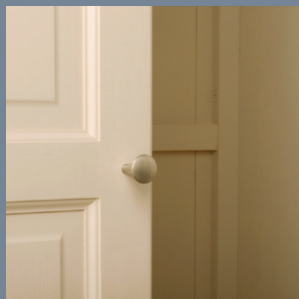
Enhance your living space with our Lundy Collection. You can create a warm and comfortable feel to your home, knowing each piece is individually crafted. We employ the best techniques whilst incorporating valued features such as high quality construction throughout, dovetailed drawers, sculptured oak tops, contemporary handles and a long-lasting ivory paint finish.



Oak sculptured top



Painted sculptured plinth



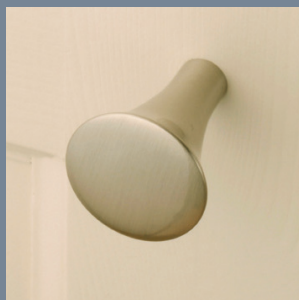
Painted interiors  
and backs



Dovetailed drawers



Cup Handles on Drawers



Trumpet Knobs on Doors

Part Assembly   
Full Assembly 

All measurements are approximate. We reserve the right to alter specification.  
November 2024.